

# AQUARIUS SUPPLY™

IRRIGATION • LIGHTING • PONDS • DRAINAGE • TURF



## TURFCARE SOLUTIONS



2021 SPRING EDITION



PROFESSIONAL CONTRACTOR SOLUTIONS

[WWW.AQUARIUSSUPPLY.COM](http://WWW.AQUARIUSSUPPLY.COM)

# AQUARIUS SUPPLY™

IRRIGATION • LIGHTING • PONDS • DRAINAGE • TURF

## IRRIGATION



## LANDSCAPE LIGHTING



## PONDS & WATER FEATURES



## COMMERCIAL & RESIDENTIAL DRAINAGE



## POROUS & PERMEABLE PAVEMENT



## OUTDOOR LIVING



## ARTIFICIAL TURF



## TOOLS & ACCESSORIES



# Contents

Pre-Emergent Crabgrass Preventer: **P3**

Broadleaf Selective Herbicide: **P3 - P4**

Summer Herbicide: **P5 - P7**

Insect Control: **P7 - P8**

Fungicide: **P8 - P9**

Landscape Bed Pre-Emergent: **P9**

Glyphosate Total Vegetation Killer: **P10**

Glyphosate Alternatives: **P10**

Pest Control: **P10 - P11**

Surfactant & Adjuvant: **P11**

Fertilizer: **P12 - P13**

Soil Amendments: **P13**

Lawn Maintenance Calendar: **P14**

Hydromulch: **P15**

Erosion Control: **P15**

Grass Seed: **P16**

Holganix Plant Probiotics: **P17 - P18**

Holganix Granular Fertilizer: **P18**

Healthy Grow Infused Holganix Granular Fertilizer: **P18**

Spotted Lanternfly Solutions: **P19**

Spreaders & Sprayers: **P20 - P21**

Accessories: **P21**

Lebanon Turf ROOTS: **P22**

Liquid Fertilizer & Bio Stimulant: **P22**

TYPAR Geosynthetics: **Inside Back Cover**



*Contact us at [Sales@AquariusSupply.com](mailto:Sales@AquariusSupply.com) to be connected with one of our Turfcare Specialists for technical questions & assistance developing an annual turf program.*



# Welcome

*to Aquarius Supply Turfcare*

## Professional Grade Supplies for the Green Industry

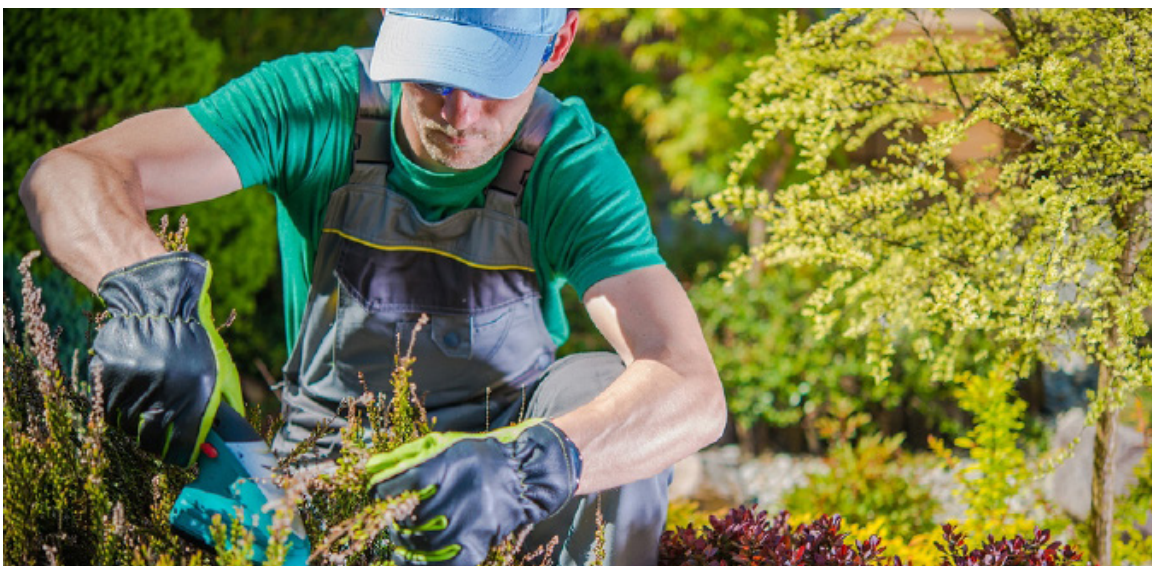
*For over 50 years, Aquarius Supply has served Landscape and Irrigation Professionals throughout the Northeast and Mid-Atlantic regions.*

*For the professional, Aquarius offers competitive prices, an extensive inventory, attractive contractor loyalty programs, and a contractor referral program to assist the homeowner in selecting the right contractor for the job.*

*Begin your journey to creating better lawns with our complete line of products, from seeding to maintenance. We have everything you need to convert a tired, old lawn to a vibrant landscape.*

*Our turf care specialists are constantly seeking new and effective solutions for simple and affordable lawn management. Through each season of the year, Aquarius Supply has the best products to create the best quality lawn.*

## Ahead of the Competition... Together!





## PRE-EMERGENT CRABGRASS PREVENTER



### CONTROL SOLUTIONS QUALI-PRO PRODIAMINE 4L

ITEM# QUP83014144 (2.5 GAL.)

**ACTIVE INGREDIENT: PRODIAMINE: 40.8%**

Quali-Pro's Prodiamine 4L Herbicide provides pre-emergent broadleaf and grassy weed control in established turfgrasses (excluding golf course putting greens), lawns and sod nurseries, ornamentals and Christmas tree farms.



### CONTROL SOLUTIONS QUALI-PRO DITHIOPYR L

ITEM# QUP83014006 (1 GAL.)

**ACTIVE INGREDIENT: DITHIOPYR: 23.6%**

Pre-emergence and early post-emergence herbicide for weed control in established lawns, commercial sod farms, non-cropland and industrial sites, ornamental turf (including to golf course fairways, roughs, tee boxes), container-grown ornamentals, field-grown ornamentals, and landscape ornamentals.

## BROADLEAF SELECTIVE HERBICIDE



### NUFARM COOL POWER

ITEM# NUF10070225 (2.5 GAL.)

**ACTIVE INGREDIENTS: MCPA: 56.14%, TRICLOPYR: 5.0%, DICAMBA: 3.6%**

Designed specifically for cool weather conditions, the premium ester formulation in Cool Power® is ideal for winter weed control, dormant warm season turf and early season applications in transition zones and cool season climates. By combining three powerful herbicides, Cool Power provides effective post-emergent control.



### PBI/GORDON SPEEDZONE BROADLEAF HERBICIDE

ITEM# PBI6581076 (1 GAL.), PBI6581126 (2.5 GAL.)

**ACTIVE INGREDIENTS: CARFENTHAZONE-ETHYL: 0.62%, 2 / 4-D, ETHYLHEXYL ESTER: 28.57%, MCPA: 5.88%, DICAMBA: 1.71%**

SpeedZone delivers visible broadleaf activity in hours, and weed death can occur within 7 to 14 days. SpeedZone also provides goosegrass control. It's highly selective in both warm- and cool-season turfgrasses, SpeedZone is rainfast in as little as three hours.



### NUFARM ESCALADE 2

ITEM# NUF10111225 (2.5 GAL.)

**ACTIVE INGREDIENTS: 2 / 4-D: 39.53%, FLUROXYPYR: 5.9%, DICAMBA: 4.1%**

Nothing knocks down unsightly weeds like Escalade® 2 herbicide. Escalade 2 combines three powerful active ingredients to control more than 240 broadleaf weeds. It starts working quickly to devastate weeds and help reduce callbacks. Plus, Escalade 2 can be tank-mixed with most liquid fertilizers and iron.



### LONTREL SPECIALTY HERBICIDE

ITEM# COR129862 (2.5 GAL.)

**ACTIVE INGREDIENTS: CLOPYRALID - 40.9%**

Lontrel® specialty herbicide provides superior postemergence control of hard-to-manage weeds, including thistle and clover, around labeled ornamentals, golf course fairways and roughs without injuring even the most sensitive turfgrasses.

READ PRODUCT LABEL FOR FULL DETAILS, APPLICATION RATES AND RESTRICTIONS

## BROADLEAF SELECTIVE HERBICIDE



### PRIME SOURCE TRIAD SELECT 3-WAY COMBINATION

ITEM# SSCTRIADSEL25 (2.5 GAL.)

**ACTIVE INGREDIENTS:** 2 / 4-D: 30.89%, MCPA: 8.23%, DICAMBA: 3.77%

Triad Select™ utilizes a combination of three selective herbicides to control a wide variety of hard-to-kill broadleaf weeds such as dandelion, clover and plantain. Triad Select has been demonstrated through university trials, to be an effective solution that can be safely applied to both cool and warm season grasses.



### PRIME SOURCE TRIAD SFZ SELECT 4-WAY COMBINATION

ITEM# SSCTRIADSFZ25 (2.5 GAL.)

**ACTIVE INGREDIENTS:** 2 / 4-D: 18.33%, MCPA: 6.65%, DICAMBA: 2.88%,

**SULFENTRAZONE: .65%**

Triad SFZ Select™ contains four active ingredients, including sulfentrazone, that broaden the spectrum of post-emergent broadleaf weed control with proven performance in turfgrass.



### CONTROL SOLUTIONS QUALI-PRO 3D

ITEM# QUP83013829 (2.5 GAL.)

**ACTIVE INGREDIENTS:** 2, 4-D: 30.56%, (+)-R-2-PROPIONIC ACID: 8.17%,

**DICAMBA: 2.77%**

For selective broadleaf weed control in turf grass on golf courses and sod farms. Also for use in non-crop areas such as highways and rights-of-way.



### NEUDORFF FIESTA SELECTIVE WEED KILLER

ITEM# NEU613924 (1 GAL.) NEU613925 (2.5 GAL.)

**ACTIVE INGREDIENT:** IRON HEDTA: 26.52%

Fiesta® Selective Weed Killer is a selective, post-emergent, broadleaf weed killer that leaves lawns healthy and weed-free using a specially formulated iron chelate solution. Fiesta works quickly, delivering visible same-day results, even in cool weather.



### CIVITAS WEEDFREE CONCENTRATE

ITEM# CVTWFUSC5U (2.5 GAL.)

**ACTIVE INGREDIENTS:** 2 / 4-D: 0.885%, MECOPROP-P: 0.573%, DICAMBA: 0.109%

CIVITAS WEEDfree Concentrate is the only hybrid selective herbicide with Microtechnology that is specially formulated with less active ingredients to kill over 60 listed broadleaf weeds. It's affordable, has no offensive odor and it kills weeds without harming lawns.



### PRIME SOURCE TRIAD TZ SELECT

ITEM# SSCTRIADTZX225G (2.5 GAL.)

**ACTIVE INGREDIENTS:** 2,4-D, 2-ETHYLHEXYL ESTER - 31.82% TRICLOPYR

**BUTOXYETHYL ESTER - 8.40% DICAMBA ACID - 2.43% SULFENTRAZONE - 0.73%**

Triad TZ Select™ contains four active ingredients, with two modes of action to provide dependable post-emergent control of broadleaf weeds. It controls the listed annual and perennial broadleaf weeds in tall and fine fescues, Kentucky bluegrass, and perennial ryegrass. Triad TZ Select™ may also be applied to fully dormant bermudagrass, fully dormant zoysiagrass and fully dormant bahiagrass.

READ PRODUCT LABEL FOR FULL DETAILS, APPLICATION RATES AND RESTRICTIONS

## SUMMER HERBICIDE



### PBI/GORDON Q4 PLUS

ITEM# PBI6971077 (1 GAL.), PBI6971127 (2.5 GAL.)

ACTIVE INGREDIENTS: 2 / 4-D: 11.81%, DICAMBA: 1.49%, QUINCLORAC: 8.43%,  
SULFENTRAZONE: 0.69%

Q4 Plus is highly selective on cool-season and listed warm-season turfgrasses. It offers rapid visual response and has a one-week reseeding interval for most listed turf.



### PBI/GORDON SURGE SELECTIVE BROADLEAF HERBICIDE

ITEM# PBI6551076 (1 GAL.), PBI6551126 (2.5 GAL.)

ACTIVE INGREDIENTS: 2 / 4-D: 18.79%, DICAMBA: 3.02%, MCP-P DMA: 6.8%,  
SULFENTRAZONE: 0.67%

Surge kills knotweed, plantain, oxalis, and other listed broadleaf weeds up to twice as fast as traditional 3-way amine products, and offers yellow nutsedge suppression.



### CONTROL SOLUTIONS QUALI-PRO QUINCLORAC

ITEM# QUP83000011 (1.5 L.)

ACTIVE INGREDIENT: QUINCLORAC: 18.92%

Dependable post-emergent control of both broadleaf and grassy weeds in a wide variety of turf species from residential and commercial to golf courses, sports fields and sod farms.



### SYNGENTA TENACITY HERBICIDE

ITEM# SYN46256 (8 OZ.)

ACTIVE INGREDIENT: MESOTRIONE: 40%

The ingredient, mesotrione, is based on a naturally occurring compound produced by the bottlebrush plant (*Callistemon citrinus*) that inhibits photosynthesis in susceptible plant species. It is absorbed by plants through the roots, shoots and leaves and distributed throughout the plant by both xylem and phloem translocation.



### TZONE SE BROADLEAF HERBICIDE

ITEM# PBI8361126 (8 OZ.)

ACTIVE INGREDIENT: TRICLOPYR BEE. BUTOXYETHYL ESTER 7.72%, SULFENTRAZONE .66%, 2,4-D, 2-ETHYLHEXYL ESTER 29.32%, DICAMBA ACID 2.22%

TZone SE Broadleaf Herbicide uses the proven performance of triclopyr and precise ratios of multiple active ingredients to provide effective cool-weather weed control in a speed product. TZone SE destroys the toughest broadleaf weeds on turf, including wild violet, ground ivy, oxalis, and clover; even young & actively growing yellow nutsedge.



### PRIME SOURCE MESO 4SC SELECT

ITEM# SSCMES4SCSEL12X8 (8 OZ.), SSCMESO4SCSEL4X1 (1 GAL.)

ACTIVE INGREDIENT: MESOTRIONE: 40% (RECOMMENDED FOR HYDROSEEDING)

Classified as a group 27 herbicide, Meso 4SC Select inhibits photosynthesis in susceptible plants and is absorbed systemically through leaves, roots and shoots. Can be effectively used for weed control prior to and when seeding of specific types of turfgrasses.



### BAYER ACCLAIM EXTRA

ITEM# BAYACCLAIM (1 GAL.)

ACTIVE INGREDIENT: FENOXAPROP-P-ETHYL: (+)-ETHYL 2-[4-[(6-CHLORO-2-BENZOZOXAZOLYL)OXY]PHENOXY]PROPANOATE - 6.59%

Acclaim® Extra Herbicide offers reliable postemergence control of crabgrass and goosegrass without harming cool-season turf. Rainfast in one hour, Acclaim Extra is most effective when weeds are young and actively growing.

READ PRODUCT LABEL FOR FULL DETAILS, APPLICATION RATES AND RESTRICTIONS



## SUMMER HERBICIDE



### PRIME SOURCE SULFENTRAZONE 4SC SELECT

ITEM# SSCSUL4SC6OZ (6 OZ.) SSCSUL4SC5GAL (1 GAL.)

**ACTIVE INGREDIENT: SULFENTRAZONE: 39.6%**

Soil-applied selective, flowable herbicide that contains 4 pounds of active ingredient per gallon. Best control is achieved with grassy weeds when applied to grasses that are actively growing and small (pre-tiller stage). For optimum control of broadleaf weeds, applications should be made shortly after weed emergence.



### CONTROL SOLUTIONS QUALI-PRO SEDGEMASTER

ITEM# QUP83014008 (1.33 OZ.)

**ACTIVE INGREDIENT: HALOSULFURON-METHYL: 75%**

SedgeMaster Herbicide is a sulfonylurea herbicide that works by inhibition of acetolactate synthase (ALS). SedgeMaster is a selective, post-emergent herbicide concentrate designed to specifically kill nutsedge and other broadleaf weeds without injury to turfgrasses and ornamentals.



### CONTROL SOLUTIONS QUALI-PRO QUINCLORAC 75DF

ITEM# QUP83000011 (.5 GAL.) QUP83013620 (1.1 LB.)

**ACTIVE INGREDIENT: QUINCLORAC: 75%**

Dependable post-emergent control of both broadleaf and grassy weeds in a wide variety of turf species from residential and commercial to golf courses, sports fields and sod farms.



### FMC PRO SOLUTIONS SOLITARE

ITEM# FMC10058335 (1 LB.), FMC10061706 (4 LB.)

**ACTIVE INGREDIENTS: SULFENTRAZONE: 1.6%, QUINCLORAC: 5.0%**

Solitare® herbicide is the only all-in-one postemergence weed control solution specifically designed to combat any combination of crabgrass, sedges and broadleaf weed problems you might encounter in a single application. No other product achieves the same powerful, broad spectrum control as Solitare without the hassle of tank mixing with other herbicides.



### FMC DISMISS TURF HERBICIDE

ITEM# FMC10058053 (6 OZ.)

**ACTIVE INGREDIENT: SULFENTRAZONE: 39.6%**

Dismiss Herbicide is faster than Image, Certainty or Monument Herbicides. Dismiss herbicide can be absorbed into foliage, but most of the product is delivered to the plant through the root system. Dismiss is gentle and well tolerated on most warm and cool season turf grasses.



### NUFARM CELERO HERBICIDE

ITEM# NUF10701401 (1 LB.)

**ACTIVE INGREDIENT: IMAZOSULFURON: 75%**

Celero® Herbicide is a selective, post-emergence herbicide for control of sedges including kyllinga in established residential and commercial turfgrass, golf courses and sod farms. Imazosulfuron, the active ingredient in Celero, is a systemic sulfonylurea (SU) herbicide that translocates down to the roots to deliver superior sedge control.



### NUFARM SURE POWER

ITEM# NUF10724225 (1 LB.)

**ACTIVE INGREDIENT: 2,4-D - 36.33%, TRICLOPYR - 3.63%, FLUROXYPYR - 3.63%,**

**FLUMIOXAZIN - 0.22%**

Sure Power® is a new standard in herbicide power to swiftly strike down challenging broadleaf weeds. Its four-way formulation manages more than 250 broadleaf weeds, making Sure Power a valued tool in the pursuit of clean cool-season turf.

READ PRODUCT LABEL FOR FULL DETAILS, APPLICATION RATES AND RESTRICTIONS

**CONTROL SOLUTIONS QUALI-PRO EXPEL****ITEM# QUP83014023 (1 QT.)****ACTIVE INGREDIENT: SULFENTRAZONE 39.6%**

EXPEL Turf Herbicide is a selective, post-emergent herbicide that controls difficult weeds such as yellow nutsedge, purple nutsedge and green kyllinga in as little as 1 to 2 days. Visible results in 24 hours. Attacks sedge from above and below the surface. Controls over 50 tough weeds. Reduces future sedge populations.

## INSECT CONTROL

**PBI/GORDON ZYLAM LIQUID SYSTEMIC INSECTICIDE****ITEM# PBI7321186 (1 QT.)****ACTIVE INGREDIENT: DINOTEFURAN: 10%**

A liquid formulation of dinotefuran, Zylam® Liquid Systemic Insecticide provides exceptional control of a broad spectrum of listed chewing and sucking insects. Used as a drench, soil injection, or bark banding application, Zylam Liquid features translaminar activity to quickly move through the leaf and control insects that hide on the underside of leaf surfaces.

**UPL UP-STAR GOLD INSECTICIDE****ITEM# UPL991012 (25 LB.)****ACTIVE INGREDIENT: BIFENTHRIN: 7.9%**

UP-Star® Gold Insecticide provides pest control professionals with reliable and effective protection for their customers and their valuable property. Delivering long-lasting control of a wide variety of troublesome pests, UP-Star Gold provides applicators with the confidence that their customers deserve.

**CONTROL SOLUTIONS PROFLEX ENCAPSULATED SOLUTIONS****ITEM# QUP82300329 (1 QT.)****ACTIVE INGREDIENTS: LAMBDA-CYHALOTHRIN: 3.88%, NOVALURON: 1.3%, PYRIPROXYFEN: 1.3%**

Proflex® is a microencapsulated concentrate containing Lambda-Cyhalothrin, Novaluron, and Pyriproxyfen for 3 modes of action that make ProFlex® a fast-acting and long-lasting solution.

**CONTROL SOLUTIONS QUALI-PRO BIFENTHRIN I/T 7.9****ITEM# QUP83013817 (1 GAL.)****ACTIVE INGREDIENT: BIFENTHRIN: 7.9%**

Sure-fire control of the toughest pest problems, including: termites, carpenter ants and all species of lawn ants in and around homes, commercial and industrial buildings, recreational areas, athletic fields, lawns and ornamentals.

**CONTROL SOLUTIONS QUALI-PRO IMIDACLOPRID T&O 2F****ITEM# QUP83080133 (1 GAL.)****ACTIVE INGREDIENT: IMIDACLOPRID: 21.8%**

For systemic control of soil inhabiting pests in turfgrass and landscape plantings; featuring low use rates, application flexibility and great value. Provides excellent systemic control and long-lasting residual. Flowable formulation is easy to measure and mix. Low use rates for cost-efficient, highly effective control.

**DREXEL DAMOIL****ITEM# DAMOIL25G (2.5 GAL.)****ACTIVE INGREDIENT: PETROLEUM OIL: 98%**

Damoil™ dormant and Summer spray oil acts as a contact insecticide for dormant or foliar sprays. For ground and aerial applications. Registered for use in Christmas tree, Citrus, Field, Fruit, Nuts, Ornamental and Vegetable crop applications.

READ PRODUCT LABEL FOR FULL DETAILS, APPLICATION RATES AND RESTRICTIONS



## CONTROL SOLUTIONS QUALI-PRO BIFEN L/P GRANULES

ITEM# QUP82004438 (25 LB.)

**ACTIVE INGREDIENT: BIFENTHRIN: 0.2%**

Controls ants, chinch bugs, fleas, mole crickets, ticks and other listed insects. Bifen L/P granules are on a high quality sand carrier. Twenty-five pounds treats up to 21,000 square feet. Also controls flea larvae and fire ants.



## BAYER DYLOX 6.2 GRANULAR WHITE GRUB CONTROL

ITEM# BAY909274 (30 LB.)

**ACTIVE INGREDIENT: TRICHLORFON: 6.2%**

Dylox 6.2 is for use in and around landscape flowers, shrubs, trees, landscape and recreational turf, golf courses, and residential turf. Dylox 6.2 Kills and Controls Armyworms Cutworms, Webworms, Cranberry Girdlers Bluegrass Weevils, Billbug Larvae, Mole Crickets, Chinch Bugs and White Grubs.

# FUNGICIDE



## BAYER ARMADA 50 WDC

ITEM# 80224672 (2 LB.)

**ACTIVE INGREDIENTS: TRIFLOXYSTROBIN: 8.33%, TRIADIMEFON: 41.67%**

Armada 50 WDC is a preventive fungicide designed for use on lawns for full-spectrum control of significant turf diseases. Its unique dual mode of action combines the power of a systemic with a contact fungicide.



## CONTROL SOLUTIONS QUALI-PRO STROBE PRO G GRANULAR

ITEM# QUP83014012 (30 LB.)

**ACTIVE INGREDIENTS: AZOXYSTROBIN: 0.31%, PROPICONAZOLE: 0.57%**

Strobe Pro G Granular Fungicide is a combination of two broad spectrum, preventative and curative fungicides with systemic properties for the control of many important turfgrass diseases.



## CONTROL SOLUTIONS QUALI-PRO CHLOROTHALONIL 720 SFT

ITEM# QUP83013385 (2.5 GAL.)

**ACTIVE INGREDIENT: CHLOROTHALONIL: 54%**

Economical, cost-effective, broad-spectrum disease control for cool and warm season grasses, trees, shrubs, and flowers. Excellent tank mix partner with most other fungicides. Labeled for use on cool and warm season grasses and on all labeled ornamentals. Contact mode of action for quick results. Multi-Site activity means no disease resistance with repeated use.



## CONTROL SOLUTIONS QUALI-PRO PROPICONAZOLE 14.3

ITEM# QUP83013373 (2.5 GAL.)

**ACTIVE INGREDIENT: PROPICONAZOLE: 14.3%**

Quali-Pro's Propiconazole 14.3 provides economical, broad-spectrum disease control for cool and warm season grasses, trees, shrubs and flowers.



## PRIME SOURCE PPZ 41.8 SELECT

ITEM# SSCPPZ418SEL (1 GAL.)

**ACTIVE INGREDIENT: PROPICONAZOLE: 41.8%**

PPZ 41.8 Select is a fungicide that controls ornamental and turfgrass diseases using a micro-emulsion formula. It has a low odor and low use rate, making it ideal for use as a tank mixture partner. This product is mainly used in golf courses, nurseries, landscaping, and commercial and residential lawns. PPZ 41.8 Select also helps to improve rate establishment when applied.

READ PRODUCT LABEL FOR FULL DETAILS, APPLICATION RATES AND RESTRICTIONS



## FUNGICIDE



### CONTROL SOLUTIONS QUALI-PRO MEFENOXAM 2 AQ

ITEM# QUP83013851 (1 GAL.) QUP83013861 (2.5 GAL.)

**ACTIVE INGREDIENTS: TRIFLOXYSTROBIN: 8.33%, TRIADIMEFON: 41.67%**

Water-based formulation features low odor. Systemic mode of action and translocation through the plant can provide up to 3 weeks protection.

## LANDSCAPE BED PRE-EMERGENT



### CONTROL SOLUTIONS QUALI-PRO T/I 2.5 G

ITEM# QUP83013967 (50 LB.)

**ACTIVE INGREDIENTS: TRIFLURALIN: 2.0%, ISOXABEN: 0.5%**

Selective pre-emergent control of more than 100 broadleaf weeds and grasses on field-and container grown ornamentals, landscape beds and more.



### DOW SNAPSHOT 2.5 TG

ITEM# COR4908 (50 LB.)

**ACTIVE INGREDIENTS: TRIFLURALIN: 2.0%, ISOXABEN: 0.5%**

Snapshot Specialty Pre-Emergent Herbicide works around the clock for up to six to eight months to keep landscapes and container- and field-grown nursery ornamentals weed-free. It controls or suppresses more than 125 broadleaf weeds and annual grasses and can be used over the top of more than 635 labeled ornamentals.



### LEBANON TREFLAN 5G HDG HERBICIDE

ITEM# LEB2436683 (40 LB.)

**ACTIVE INGREDIENT: TREFLAN AT 5%**

A granular weed control product on an HDG carrier. For maintenance of existing trees, shrubs, and flowers. Treflan at 5% for pre-emergent control of annual grasses and broadleaf weeds. Please see label for specific information on pests controlled, application rates, timing and use.



### NUFARM SUREGUARD SC

ITEM# NUF10698861 (1 PT.)

**ACTIVE INGREDIENT: FLUMIOXAZIN: 44%**

SureGuard® SC provides an exceptional value that allows you to offer more and make more - a perfect solution for your customers. SureGuard SC delivers the same long lasting residual control of grass and broadleaf weeds that you've come to expect from SureGuard in a new convenient liquid formulation.



### CONTROL SOLUTIONS QUALI-PRO ISOXABEN 75WG

ITEM# QUP83013493 (1 LB.)

**ACTIVE INGREDIENT: ISOXABEN: 75%**

Up to 8 months of selective pre-emergent control of broadleaf weeds with a single application. Performance proven on both cool and warm season turfgrass and in the ornamental, landscape and nursery markets.

READ PRODUCT LABEL FOR FULL DETAILS, APPLICATION RATES AND RESTRICTIONS

## GLYPHOSATE TOTAL VEGETATION KILLER



### CONTROL SOLUTIONS QUALI-PRO GLYPHOSATE PLUS

ITEM# QUP83013698 (2.5 GAL.)

**ACTIVE INGREDIENT: GLYPHOSATE: 41%**

Complete broad spectrum professional herbicide for weed control in turf and ornamentals. Proven broad spectrum control in turf and ornamental applications. Mixes readily with water and tank mix compatible with registered products.



### MONSANTO ROUNDUP QUIKPRO

ITEM# BAY86764776 (6.8 LB.), BAY86703041 (CASE OF 5, 1.5 OZ. PACKETS)

**ACTIVE INGREDIENTS: DIQUAT DIBROMIDE: 2.9%, GLYPHOSATE: 73.3%**

Roundup QuikPRO is a wettable granular, non-selective post-emergent herbicide for commercial, industrial, non-crop and residential use.

## GLYPHOSATE ALTERNATIVES



### NUFARM CHEETAH PRO

ITEM# NUF10761041 (1 GAL.), NUF10761225 (2.5 GAL.), NUF10761030 (30 GAL.)

**ACTIVE INGREDIENT: GLUFOSINATE AMMONIUM: 24.5%**

Cheetah® Pro non-selective, post-emergence herbicide provides fast, effective control of the toughest broadleaf and grass weed challenges, including those resistant to glyphosate and multiple herbicide classes.



### NEUDORFF FINALSAN WEED & GRASS KILLER

ITEM# NEU613819 (2.5 GAL.)

**ACTIVE INGREDIENTS: AMMONIATED SOAP OF FATTY ACIDS**

Patented fast-acting weed, grass, algae, and moss killer. Using a specially formulated, non-staining, ammonium soap of fatty acids, Finalsan is a non-selective herbicide that controls or suppresses many common annual, biennial, and perennial weeds.

## PEST CONTROL



### EPIC REPELLENTS DEER SCRAM PROFESSIONAL

ITEM# ENV1025 (25 LB.)

**ORGANIC OPTION: BLOOD MEAL: 42%, GARLIC: 4%, RED PEPPER: 2.8%, CLOVES: 1.5%**

Deer Scram won't harm animals, the environment and, most importantly, you and your family. Blended from selected organic components, Deer Scram will keep deer off your plantings because it convinces deer that harm is nearby through their uncanny sense of smell.



### EPIC REPELLENTS MOLE SCRAM PROFESSIONAL

ITEM# ENV5225 (22 LB.)

**ORGANIC OPTION: CASTOR OIL: 17%, CITRONELLA OIL: .9997%, GARLIC OIL: .0003%, PEANUT HULLS: 82%**

Mole Scram works by combining taste that moles dislike as well as a strong odor that is very mild to people but offensive to moles.



### EPIC REPELLENTS GOOSE SCRAM PROFESSIONAL

ITEM# ENV5922 (22 LB.)

**ORGANIC OPTION: WHITE THYME: 0.06%, CINNAMON OIL: 0.55%, CASTOR OIL: 4%,**

**FISH OIL: 1%, WHITE PEPPER: 2.25%, CEDAR OIL: 2.25%, GARLIC OIL: 0.06%**

Goose Scram is an all natural granular goose repellent that won't harm animals or the environment. It naturally deters geese from the protected area keeping geese away for up to 25 days.

READ PRODUCT LABEL FOR FULL DETAILS, APPLICATION RATES AND RESTRICTIONS

## PEST CONTROL



### LATORRE'S DEER OUT REPELLENT CONCENTRATE

ITEM# DEEROUT1G (1 GAL.), DEEROUT25G (2.5 GAL.)

**ORGANIC OPTION: PROPRIETARY FORMULA OF PEPPERMINT, PEPPER & GARLIC**

LaTorre's Deer Out™ is an all-natural, proven effective deer repellent that's guaranteed to keep deer out of your garden for up to 3 to 4 months without the use of chemicals or poisons. Deer Out™ can be sprayed directly on your plants and uses a custom blend of oils with a peppermint fresh scent to keep deer away from your precious plantings.



### TICK KILLZ EFFECTIVE PEST CONTROL

ITEM# TKZ13232 (32 OZ.), TKZ13249 (64 OZ.) TKZ13225 (2.5 GAL.)

**ORGANIC OPTION: CEDAR OIL: 39.7%, 2-PHENTHYL PROPIONATE: 14.7%,**

**PEPPERMINT OIL: 1%**

Tick Killz is a highly effective natural tick and mosquito repellent for yards. Our pet safe bug spray is made with 100% All Natural ingredients. It will control ticks, mosquitoes, fleas and many other nuisance insects on contact.



### TALPIRID MOLE BAIT

ITEM# MO7150 (20 WORM-SHAPED BAITS)

**ACTIVE INGREDIENT: BROMETHALIN: 0.025%**

Talpirid Mole Bait is a mole bait designed, developed, and scientifically proven to kill moles. After much research and development, Bell Labs has manufactured Talpirid Mole Bait to closely resemble the earthworm (the mole's preferred food source).

## SURFACTANT / ADJUVANT



### PRECISION LABORATORIES 80:20 NON-IONIC SURFACTANT

ITEM# 8020SURFACTANT25 (2.5 GAL.)

**ACTIVE INGREDIENTS: ALKYL POLYETHOXY ETHERS,**

**ETHOXYLATED DERIVATIVES: 80%**

Economical, 80% active, low-foaming, non-ionic activator adjuvant that enhances crop protection performance by improving spray solution coverage and penetration.



### PBI/GORDON TRANSFILM ANTI-TRANSPIRANT

ITEM# PBI8371126 (2.5 GAL.)

**ACTIVE INGREDIENTS: OXIDIZED POLYETHYLENE: 9.12%,**

**POLYMERIC TERPENES: 8.18%**

TransFilm® Anti-Transpirant coats leaf surfaces with a clear, glossy film that provides a water-impermeable layer to protect the plant and decrease the rate of transpiration.



### PRIME SOURCE MSO SELECT METHYLATED SEED OIL

ITEM# SSCMSOSEL25 (2.5 GAL.)

**ACTIVE INGREDIENT: MODIFIED VEGETABLE OIL: 100%**

MSO Select is a unique combination of highly refined methylated seed oil, selected emulsifiers and surfactants. Many herbicides recommend or require the addition of methylated seed oil. MSO Select is readily absorbed into the waxy cuticle of plants, allowing the active ingredient to reach its target more efficiently.



### PRIME SOURCE 80/20 SELECT

ITEM# SSC8020SELECT (2.5 GAL.)

**ACTIVE INGREDIENT: PROPRIETARY BLEND OF NONIONIC SURFACTANTS AND**

**HUMECTANTS 80%**

80/20 is a high quality, general purpose nonionic surfactant that can be used in most situations. Whether spraying insecticides, fungicides or herbicides, 80/20 Select will improve their performance.

READ PRODUCT LABEL FOR FULL DETAILS, APPLICATION RATES AND RESTRICTIONS



## GRANULAR PRE-EMERGENT FERTILIZER

15-0-5 CRABGRASS PREVENTER & GREEN-UP WITH CAVALCADE  
(PRODIAMINE)

ITEM# GFS826815 (50 LB.)

ACTIVE INGREDIENT: CAVALCADE: .37%

14-0-2 WEED CONTROL

ITEM# SPV2074660T (50 LB.)

ACTIVE INGREDIENTS: PRODIAMINE: .37%, XCU: 20%, TIMAC

20-0-10 STD

ITEM# SPVBLEND08447 (50 LB.)

ACTIVE INGREDIENTS: PRODIAMINE: .37%, XCU: 30%,  
15% AM-SUL, 20% BIO SOLIDS

13-0-5 CRABGRASS CONTROL WITH DIMENSION (DITHIOPYR)

ITEM# GFS865363 (50 LB.)

ACTIVE INGREDIENTS: XCU: 25%, DIMENSION: .15%

18-0-3 CRABGRASS CONTROL WITH DIMENSION (DITHIOPYR)

ITEM# SPV2019123T (50 LB.)

ACTIVE INGREDIENTS: XCU: 25%, DIMENSION: .15%



## GRANULAR WEED & FEED POST-EMERGENT FERTILIZER

18-0-5 WITH LOCKUP (PENOXSULAM)

ITEM# GFS860532 (50 LB.)

ACTIVE INGREDIENTS: XCU 25%, LOCKUP

15-0-5 WITH TRIMEC (2 / 4-D, DIMETHYLAMINE SALT)

ITEM# GFS875066 (50 LB.)

ACTIVE INGREDIENTS: XCU: 40%, TRIMEC: .84%



## GRANULAR INSECT CONTROL FERTILIZER

17-0-3 CONTROLLED RELEASE

ITEM# SPVBLEND08446 (50 LB.)

ACTIVE INGREDIENTS: XCU: 40%, IRON: 2%, LMBDA: .04%, IMI: .20%

12-0-0 CONTROLLED RELEASE WITH MALLET (IMIDACLOPRID)

ITEM# GFS856003 (50 LB.)

ACTIVE INGREDIENTS: XCU: 20%, MALLET: .20%, LMBDA: .04%

0-0-7 MINERAL

ITEM# GFS856001 (50 LB.)

ACTIVE INGREDIENTS: .20% MALLET.04% LAMBDA



## GRANULAR SEASONAL FERTILIZER

25-0-3 SLOW RELEASE GREEN-UP

ITEM# GFS840195 (50 LB.) ACTIVE INGREDIENTS: XCU: 50%, IRON: 3%  
RECOMMENDED FOR FALL SEASONAL USE

5-0-20 WARM SEASON SLOW RELEASE & GREEN-UP

ITEM# SPVBLEND04195 (50 LB.) ACTIVE INGREDIENT: IRON: 10%  
RECOMMENDED FOR USE PRIOR TO STRESS PERIODS

24-0-5 30%XRT 2%FE

ITEM# KNX1519309 (50 LB.) ACTIVE INGREDIENT: 30% XRT, 2% FE

28-0-3 50%XRT 35%BIO

ITEM# KNX1538579 (50 LB.) ACTIVE INGREDIENT: 50% XRT, 35% BIO

21-0-0 GREEN-UP GRANULAR MID 140-165

ITEM# FRT21XOXOG (50 LB.)



READ PRODUCT LABEL FOR FULL DETAILS, APPLICATION RATES AND RESTRICTIONS

## GRANULAR ORNAMENTAL FERTILIZER

14-14-14 3 - 4 MONTH SLOW RELEASE

ITEM# FRT14X14X1450 (50 LB.)

RECOMMENDED FOR USE ON TREES, SHRUBS, ANNUALS & PERENNIALS

## GRANULAR STARTER FERTILIZER

10-20-10 ROOT DEVELOPMENT & NEW LAWN STARTER

ITEM# GF102010 (50 LB.)

LEBANON TURF 21-22-4 35% SLOW RELEASE

ITEM# LEB2153867 (40 LB.)

ACTIVE INGREDIENT: MESOTRIONE: .08% (PRE-EMERGENT WEED CONTROL)

12-22-10 STD, UREA, DAP, 30% BIO SOLIDS

ITEM# SPVBLEND08445 (50 LB.)

## WATER SOLUBLE FERTILIZER

10-30-20 BLOSSOM BOOSTER

ITEM# GF103020 (25 LB.)

RECOMMENDED FOR USE ON FLOWER BEDS

20-20-20 GROWTH ACCELERATOR

ITEM# GF202020 (25 LB.)

RECOMMENDED FOR USE ON FLOWER BEDS

46-0-0 MICRO-PRILLED UREA

ITEM# FRT46X0X0XSOLUBL (50 LB.)

21-0-0 AMMONIUM SULFATE GREEN-UP &  
DENSITY IMPROVER

ITEM# FRT21X0X0WS (50 LB.)



## SOIL AMENDMENTS



SOLU-CAL PLUS ENHANCED CALCITIC LIME

ITEM# SOLUCALPLUS (50 LB.)

ACTIVE INGREDIENT: CALCIUM: 36%, MICROBIAL BIOCATALYST

Solu-Cal PLUS with INTENSIFY Soil Microbial BioCatalyst. Calcium to Raise pH & Promote Maximum Nutrient Availability, Probiotics to Release Nutrient Reserves. Formulated with beneficial microbes to significantly increase nutrient availability and efficiency while decreasing use rates. 36% Calcium for efficient pH adjustment yielding healthier soil.

GRANULAR DOLOMITIC LIME SOIL TREATMENT

ITEM# OCSLIME (50 LB.)

PROFESSIONAL PELLETTED GYPSUM SOIL CONDITIONER

ITEM# OCSGYPSUM (50 LB.)

RECOMMENDED TO NEUTRALIZE TOXIC DAMAGE

DAKOTA PEAT GROWTH ENHANCER

ITEM# DAKDP002 (24 LB.)

C20 MINI-PELLET SOIL BUILDER

ITEM# PORC20 (40 LB.)



READ PRODUCT LABEL FOR FULL DETAILS, APPLICATION RATES AND RESTRICTIONS

LAWN MAINTENANCE CALENDAR

	WINTER			SPRING			SUMMER			FALL		
TASK	DEC	JAN	FEB	MAR	APR	MAY	JUN	JUL	AUG	SEP	OCT	NOV
PRE EMERGENT, BEDS			1*									
PRE EMERGENT, LAWNS				2*								
FERTILIZER, TREES & SHRUBS			3*									
FERTILIZER & LAWNS				4*								
LAWN DISEASE				5*								
BROADLEAF WEEDS				6*						7*		
INSECTS & BEDS					7*							
INSECTS & TURF							8*					
AERATION									9*			
OVERSEEDING		11*								10*		
LIME	12*											12*
SOIL TESTING						13*						

NOTES\*

1	Pre-emergents in beds can be liquid or granular and need to happen before germination. Typically happens before other maintenance operations.
2	Seed germination is related to soil temperature. When the soil temperature at the surface reaches 55°F for four or five consecutive days, crabgrass begins to germinate.
3	Fertilizing trees and shrubs is usually done when dormant. See your Aquarius Supply Turfcare Specialist for specifics.
4	Fertilizing lawns should happen when it is actively growing. <b>Each state may have different requirements confirm with state officials.</b>
5	Lawn diseases usually happen when the grass is under stress whether it is flush growth, too much rain or the wrong temperatures at the wrong time. There are many diseases that affect our lawns and it is best to be knowledgeable about them and what products to use.
6	Broadleaf weeds can happen before the grass is mowed with specific products. All of them work during active growing. Check the label to make sure they do not interfere with seeding if you are planning to do so within a month or two.
7	You should be looking for insect problems during the growing season and know what insecticide to use before applying. Check with your Aquarius Supply Turfcare Specialist if you are unsure. Always use the least amount of insecticide possible.
8	There are many turf insects affecting the lawns in the Mid-Atlantic Region. Grubs, Chinch bugs, and Bluegrass Billbugs are some of the worst.
9	Aeration can be completed through core aeration, slit seeding or through tines. Complete just before seeding as it exposes the soil for the seed interface.
10	The best way to a great lawn is through the introduction of superior grass seed. Optimal timing is early September as you want the grass seed to germinate and get mowed at least 3 times before going dormant. Remember to keep leaves off of grass areas.
11	You can put out grass seed when the grass is frozen and crunchy. If you opt for this you need to delay pre-emergents. Great for spot treatment.
12	Lime can be applied at any time of the year. Most opt to do this in the slower times. Soil test is recommended.
13	Soil tests should happen every three years to make sure you are giving the lawn what is required.

Each state may have different requirements as it pertains to fertilizers and herbicides. Please consult with your Department of Agriculture for details. The chart above is intended to be an estimated guideline and is subject to modification with change in forecasted weather.

READ PRODUCT LABEL FOR FULL DETAILS, APPLICATION RATES AND RESTRICTIONS



## HYDROMULCH

### HYDROMULCH 70/30 WOOD BLEND

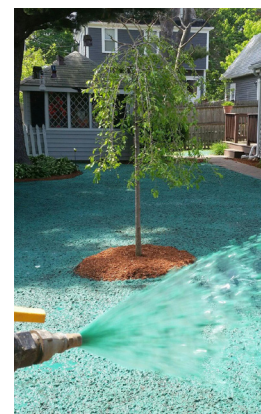
#### ITEM# HYDROSEED7030 (50 LB. BAIL)

This mix of 70% Wood Fiber and 30% Cellulose offers improved moisture retention, yet is easier to pump than 100% Wood Fibers.

### HYDROMULCH PREMIUM RECYCLED CELLULOSE

#### ITEM# HYDROSEED100 (50 LB. BAIL)

Premium hydroseeding mulch, consisting of 100% wood cellulose recycled from newsprint but contains no slick paper commonly incorporated in similar products. This select blend of fibers produces high water-holding capacity and provides an optimum insulated environment for seed germination.



## EROSION CONTROL



### PROFILE FUTERRA F4 NETLESS BLANKET

#### ITEM# PRFCFF7890GNTL(78 IN. X 90 FT.)

Futerra® F4 Netless® employs a lightweight, yet lofty matrix that provides high levels of slope protection and rapid vegetative establishment. It is particularly well-suited for fine turf and environmentally sensitive areas. All weeds and pathogens are removed from its recycled wood fibers during a patented Thermally Refined® process.



### PROFILE FLOCLOC TACKIFIER ADHESIVE COMPOUND

#### ITEM# PRTLFFLOC3 (3 LB.)

A polyacrylamide (PAM) flocculating soil stabilizer, FlocLoc™ coagulates soil particles suspended in water, dropping them from runoff. FlocLoc can be used for temporary erosion and dust control. Just one 3-lb (1.4 kg) jug will provide temporary stabilization to 1 acre of exposed soil!



### PENNMULCH SEED ACCELERATOR

#### ITEM# LEB2396104 (40 LB.)

This combination pelletized recycled paper mulch and fertilizer product absorbs moisture and expands to 3 times its original size when watered to maintain moisture in the seeded area, requiring less watering while the grass seed germinates successfully. Includes hydrobond tackifier that creates a matrix of the mulch and seed to prevent movement on sloped areas during critical time of seedling development.



### SINGLE-NET STRAW EROSION CONTROL BLANKET

#### ITEM# EROS1 (900 SQ. FT.), EROS14X112 (450 SQ. FT.)

Single net straw erosion control blankets are biodegradable products ideal for erosion control in low level areas (slopes up to 3:1), low flows, or mild stabilization requirements. Typically lasting up to 12 months, the single net straw blanket can provide the support you need until vegetation and seeding is able to effectively take root.



### DEWITT STRAW TACKSACK

#### ITEM# DEWSTRAW28 (COVERS 500 SQ. FT.)

DeWitt Straw TackSack is a sack of straw seeding mulch designed to stop erosion and speed up germination. TackSack is made of finely processed straw, cut twice and processed with a bonding agent that gives straw a tackiness which holds it together and protects grass seed from heavy washout, runoff and wind. TackSack conserves water, naturally biodegrades and is safe for pets and children. It also makes great bedding for livestock.

READ PRODUCT LABEL FOR FULL DETAILS, APPLICATION RATES AND RESTRICTIONS

## GRASS SEED

### ATHLETIC FIELD MIX

ITEM# SEE80AF10R10KY (50 LB.)

BLEND OF 80% FESCUE, 10% PERENNIAL RYE, 10% KENTUCKY BLUEGRASS

### 80 / 20 BLEND

ITEM# SEE80TF20PR (50 LB.)

BLEND OF 80% TALL FESCUE, 20% PERENNIAL RYE

### TRI-FESCUE BLEND

ITEM# SEETFB (50 LB.)

BLEND OF TOP RATED TALL FESCUE

### SUN & SHADE MIXTURE

ITEM# SEESSM50 (50 LB.)

MIXTURE OF COOL SEASON GRASSES REQUIRING 4 HRS. OF SUN PER DAY

### CREEPING RED FESCUE

ITEM# SEECRF (50 LB.)

RECOMMENDED FOR USE IN DENSE SHADE

### TRI-PLEX PERENNIAL RYEGRASS OVERSEEDING BLEND

ITEM# SEETR3 (50 LB.)

BLEND OF TOP RATED PERENNIAL RYEGRASS



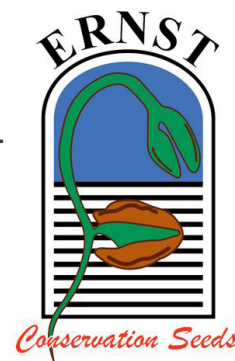
## ERNST CONSERVATION SEEDS

ERNST CONSERVATION SEEDS SUPPLIES THE HIGHEST QUALITY NATIVE PLANT SEEDS, NATURALIZED PLANT SEEDS, SEED MIXES AND BIOENGINEERING (LIVE PLANT) MATERIALS.

THEIR BULK SEED MIXES REPRESENT A HIGH DEGREE OF BIODIVERSITY WITH THE INTENTION OF RESTORING THE GREATEST ECOLOGICAL FUNCTION TO THE SITES ONTO WHICH THEY ARE PLANTED.

PRODUCTS ARE SOLD AS INDIVIDUAL SPECIES SEEDS, SEED MIXES (PRE-FORMULATED & CUSTOM MIXES AVAILABLE)

CONTACT US FOR MORE INFORMATION



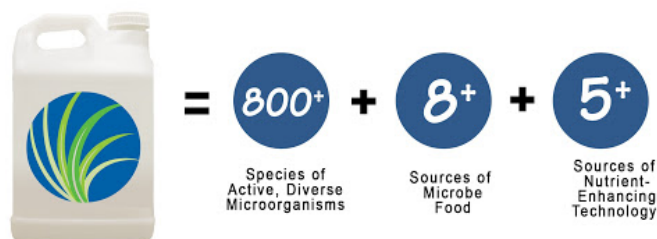
TODAY, WITH OVER 9,000 ACRES IN PRODUCTION, ERNST GROWS HUNDREDS OF DIVERSE CROPS FOR CONSERVATION, ECOLOGICAL RESTORATION, BEAUTIFICATION, ENERGY FEED-STOCK AND WILDLIFE HABITAT.

FUTURE GROWTH OPPORTUNITIES CAN BE SEEN IN INCREASED PUBLIC AND GOVERNMENTAL INTEREST IN SUSTAINABLE LANDSCAPES, LOW-IMPACT DEVELOPMENT, RESPONSIBLE RECLAMATION AND RESTORATION, POLLINATOR HABITAT, IMPROVED BIODIVERSITY AND EVOLVING PRACTICES IN CONSERVATION AGRICULTURE.

READ PRODUCT LABEL FOR FULL DETAILS, APPLICATION RATES AND RESTRICTIONS



# HOLGANIX PLANT PROBIOTICS



## BIO 800+ LAWN

ITEM# HGXBIO800L1 (1 GAL.), HGXBIO800L225 (2.5 GAL.),  
HGXBIO800LR1G (BULK DELIVERY BY GAL.)

With Holganix Bio 800+ Lawn, you reduce your fertilizers and concentrated pesticides up to 75% while providing the lush, green turf your customers expect! An organic plant probiotic, Holganix Bio 800+ Lawn charges the soil with over 800 species of microbes to build healthy soils that do a lot to care for the plant naturally.



## BIO 800+ TREE & SHRUB

ITEM# HGXBIO800T1 (1 GAL.), HGXBIO800T225 (2.5 GAL.)

Holganix Bio 800+ Tree and Shrub recreates this natural, forest soil environment for your trees and shrubs by building up the soil microbes in and around your landscaping, which in turn promotes root development and nutrient uptake.



## BIO 800+ BLOOM

ITEM# HGXBIO800B32RTU (32 OZ. SPRAY),  
HGXBIO800B1 (1 GAL.), HGXBIO800B225 (2.5 GAL.)

Harness the power of over 800 soil microbes with Holganix Bio 800+ Bloom! An organic plant probiotic, Holganix Bio 800+ Bloom charges soil with diverse soil microbes to improve soil health and deliver more plentiful, and more colorful blooms.



## BLUE SKY 21-0-0, 60% SLOW RELEASE

ITEM# HGXBLSKY210025G (2.5 GAL.),  
HGXBLSKY2100275G (275 GAL. TOTE)

Blue Sky is a powerful liquid fertilizer with a high focus on delivering high-quality nitrogen to increase plant growth and color. It contains 60% slow-release nitrogen and 40% quick-release nitrogen to provide the perfect timed release to feed your plants.



## PB1 LTO

ITEM# HGXPB1LTO25G (2.5 GAL.)

Looking to nurture green, thick turf using fewer synthetic fertilizers? Then Holganix PB1 is the tool for you! Holganix PB1 contains a combination of high-quality quick and slow release nitrogen, layered with 6 soil microbes, a long-chain poly amino acid and molasses.

Why Use Holganix Blue Sky?		
Pop of Color while reducing burn potential	Extend results throughout the season	Foster a balanced soil ecosystem with biological food sources
Combine with Holganix liquid for optimal plant health.		

Why Use Holganix PB1?			
Increase tolerance of stress from weather, disease + insect	Increase soil health	Enhance nutrient uptake	Great complement to Bio 800®
Combine with Holganix Bio 800® and Holganix PreBiotic Fertilizer for optimal results.			

READ PRODUCT LABEL FOR FULL DETAILS, APPLICATION RATES AND RESTRICTIONS

## HOLGANIX PLANT PROBIOTICS



### PREBIOTIC 30-0-0

#### ITEM# HGXLF300025G (2.5 GAL.)

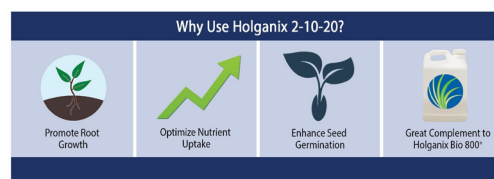
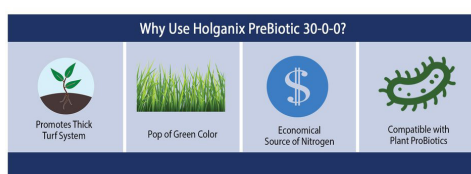
Holganix PreBiotic 30-0-0 is a stabilized nitrogen liquid fertilizer containing microbe food to promote a thick turf system and pop of color. The product is also both an economical source of nitrogen with low salt content, making the product compatible with plant probiotic products.



### PREBIOTIC 2-10-20

#### ITEM# HGX2102025G (2.5 GAL.)

Holganix PreBiotic 2-10-20 is a phosphorus and potassium focused fertilizer developed to promote the growth of SHOOTS and ROOTS in turf and plants. Use this product as your go-to seed starter and winterizer, or use the product whenever phosphorus and potassium are needed. When combined with Holganix Bio 800+ products, Holganix PreBiotic 2-10-20 results are enhanced.



## HOLGANIX GRANULAR FERTILIZER

### 2-4-3 PLANT START ROOT BUILDER & BIO BOOSTER

#### ITEM# HGX243SRN (6 LB. JUG)

#### MYCORRHIZAE CHARGED ORGANIC GRANULAR FERTILIZER

#### RECOMMENDED FOR US ON LANDSCAPE INSTALLATIONS

### 12-0-2 SLOW RELEASE

#### ITEM# HGXG1202PSR (50 LB.)

#### ACTIVE INGREDIENT: PRODIAMINE: .37%

### 10-0-0 SLOW RELEASE

#### ITEM# HGXG1000SR (50 LB.)

#### RECOMMENDED AS A META GROWTH CATALYST



## HEALTHY GROW INFUSED HOLGANIX GRANULAR

### 10-3-2, 70% SLOW RELEASE INFUSED WITH HOLGANIX BIO 800+

#### ITEM# HGX1032SRN (6 LB. JUG)

#### RECOMMENDED TO MAXIMIZE GREENING, SOIL HEALTH & ROOT DEVELOPMENT

### 7-9-5, 60% SLOW RELEASE INFUSED WITH HOLGANIX BIO 800+

#### ITEM# HGX795SRN (50 LB.)

#### RECOMMENDED TO PUSH ROOTING & SEED GERMINATION

### 2-4-3, 90% SLOW RELEASE INFUSED WITH HOLGANIX BIO 800+

#### ITEM# HGX243SRN (50 LB.)

#### RECOMMENDED TO BEAUTIFY GARDEN BEDS & NURTURE PLANT INSTALLATIONS

**healthy grow**  
PROFESSIONAL

HEALTHY GROW IS A GRANULAR, ORGANIC BASED FERTILIZER CREATED FROM EGG LAYING POULTRY MANURE. HEALTHY GROW HAS AN ACCM (AEROBICALLY COMPOSTED CHICKEN MANURE) BASE, WHICH MEANS THE MANURE IS AEROBICALLY COMPOSTED OVER A 45 - 60 DAY PERIOD.



READ PRODUCT LABEL FOR FULL DETAILS, APPLICATION RATES AND RESTRICTIONS



## SPOTTED LANTERNFLY SOLUTIONS



### PBI/GORDON ZYLAM LIQUID SYSTEMIC INSECTICIDE

ITEM# PBI1414616 (1 QT.)

**ACTIVE INGREDIENT: DINOTEFURAN: 10%**

A liquid formulation of dinotefuran, Zylam® Liquid Systemic Insecticide provides exceptional control of a broad spectrum of listed chewing and sucking insects. Used as a drench, soil injection, or bark banding application, Zylam Liquid features translaminar activity to quickly move through the leaf and control insects that hide on the underside of leaf surfaces.



### CONTROL SOLUTIONS QUALI-PRO BIFENTHRIN I/T 7.9

ITEM# QUP83013817 (1 GAL.)

**ACTIVE INGREDIENT: BIFENTHRIN: 7.9%**

Sure-fire control of the toughest pest problems, including: termites, carpenter ants and all species of lawn ants in and around homes, commercial and industrial buildings, recreational areas, athletic fields, lawns and ornamentals.



### CONTROL SOLUTIONS QUALI-PRO IMIDACLOPRID T&O 2F

ITEM# QUP83080133 (1 GAL.)

**ACTIVE INGREDIENT: IMIDACLOPRID: 21.8%**

For systemic control of soil inhabiting pests in turfgrass and landscape plantings; featuring low use rates, application flexibility and great value. Provides excellent systemic control and long-lasting residual. Flowable formulation is easy to measure and mix. Low use rates for cost-efficient, highly effective control.



### OLSON PRODUCTS YELLOW STIKY TAPE

ITEM# YST6X530 (6 IN. X 530 FT.)

Yellow, double-sided adhesive coated polyethylene tape. Useful for capturing crop damaging insects. One acre of crop requires approximately 7200 lineal feet of tape for every double row. Often used in larger agricultural, horticulture environments.



### PENTRA-BARK PENETRATING SURFACTANT

ITEM# PENTRABARK (1 GAL.)

**ACTIVE INGREDIENTS: ALKYLPHENOL ETHOXYLATE, POLYSILOXANE POLYETHER CO-POLYMER, PROPYLENE GLYCOL: 99.8%**

Pentra-Bark Surfactant has been specifically designed for use on herbaceous woody plant surfaces with fungicides, insecticides, plant growth regulators and micro-nutrients.

PRODUCT	ACTIVE INGREDIENT	APPLICATION	DOSAGE	TIMING	RE-TREAT
ZYLAM LIQUID INSECTICIDE	DINOTEFURAN: 10%	Soil Drench or Soil Injection	Ask your Turfcare Specialist	Begin in July	Annual
QUALI-PRO BIFENTHRIN I/T 7.9	BIFENTHRIN: 7.9%	Indoor areas, athletic fields, lawn & ornamentals	Ask your Turfcare Specialist	Begin in July	Annual
QUALI-PRO IMIDACLOPRID T&O 2F	IMIDACLOPRID: 21.8%	Used on landscapes, turf and golf courses	Ask your Turfcare Specialist	Spring through Late Summer	Annual

READ PRODUCT LABEL FOR FULL DETAILS, APPLICATION RATES AND RESTRICTIONS

## SPREADERS & SPRAYERS



### CHAPIN 80 LB. PROFESSIONAL LANDSCAPER SPREADER

#### ITEM# CHP89108

This 80 lbs. capacity spreader is equipped with heavy-duty features for longevity and precision. Featuring Chapin SureSpread technology it comes with a solid steel linkage gate control that opens and closes the gate in incremental steps and spread pattern control that allows you to close off the gate openings where product should not be released.



### CHAPIN 80 LB. CONTRACTOR TURF SPREADER

#### ITEM# CHP8301C

Chapin Contractor Spreaders are equipped with heavy duty features for longevity and precision. The 80-Pound Contractor Turf Spreader has a large 1-piece hopper fully supported by a rugged powder-coated steel frame. Spread comfortably and efficiently with a rubber-gripped t-handle and solid steel linkage gate control.



### CHAPIN 100 LBS. PROF HEAVY DUTY SALT & ICE MELT SPREADER

#### ITEM# CHP82108

The 100-Pound Salt and Ice Melt Spreader has a large, 2 piece hopper design that boasts stainless steel handles and frame, solid linkage for full gate control, spiked auger to help move salt and tear through clumps, 14" pneumatic tires for just about any terrain. Protective rain/snow cover included.



### PBI / GORDON SPRED-RITE G GRANULE SPREADER

#### ITEM# PBI3134006

The Spred-Rite® G Granule Spreader is the quick, easy, and more precise way to spread granular herbicides, fungicides, insecticides, and fertilizers. Light weight and versatile, it's perfect for targeted applications around trees, shrubs, poles, and railings, or for edging around buildings, walks, and curbs. The application band of the Spred-Rite G can be adjusted from 2 inches to 3 feet, and it has no metal parts to corrode or rust.



### CHAPIN 1.5 L. POLY HAND CRANK SPREADER

#### ITEM# CHP8706A

Compatible with fertilizer, seeds and salt / ice-melt. Easy-crank design with enclosed gears to protect from debris. Lightweight and easy to maintain. Great for small areas.



### CHAPIN 3 GAL. PROSERIES POLY SPRAYER

#### ITEM# CHP26031XP

The Chapin ProSeries Poly Sprayer is ideal for the landscape and turf professional but easily used by the homeowner too. The 3-Gallon translucent poly tank has a 4-inch wide mouth opening for easy filling, cleaning and checking fluid levels. This sprayer features the Sure-Spray Anti-Clog filter, poly wand, cushion grip poly shut-off, adjustable brass and poly cone nozzles and ergonomic handle for easy carrying.



### CHAPIN 4 GAL. "MIXES ON EXIT" (MOE) BACKPACK SPRAYER

#### ITEM# CHP63950, CHP68063 (2 PCS. 40 OZ. CONCENTRATE TANKS)

The CHAPIN MOE Backpack Sprayer comes with 2 Concentrate Tanks, the clean tank spraying system. Accurately adjust your chemical concentration from 1 - 10 oz. per gal. The 4-Gallon poly tank has a 4-inch wide mouth opening. Featuring a 3-stage filtration system to prevent clogging, a translucent poly tank for viewing of fluid level, poly wand, cushion grip poly shut-off, brass nozzle and padded shoulder straps. Comes with a 3 piece nozzle kit.

READ PRODUCT DOCUMENTATION FOR SETTINGS & APPLICATION RATES

## SPREADERS & SPRAYERS



### CHAPIN 4 GAL. 24V RECHARGEABLE BACKPACK SPRAYER

#### ITEM# CHP63924

The Chapin 24v Battery Powered Backpack Sprayer features a 24-volt Lithium Ion battery with a battery charger. Enjoy 2 hours of continuous spraying, that's up to 58 gallons! Offers 35-40 PSI with a 20-22-foot maximum horizontal spray stream and up to 32-foot vertical spray stream, 6-inch wide mouth funnel for easy filling and cleaning with a carrying handle built right into the cap.



### CHAPIN 4 GAL. PROSERIES II BACKPACK SPRAYER

#### ITEM# CHP63600

The Chapin Professional 4 Gallon backpack sprayer is the pros choice for larger spray jobs. The sprayer features an over-sized filler cap that makes filling the tank easy with less spilling, large capacity 4 gallon tank, and carrying straps. Finally, a reinforced hose with extended wand and adjustable nozzle. Heavy-duty poly construction and VITON chemical resistant seals ensure years of protection and resistance to wear and tear.

## ACCESSORIES



### ACCU-POUR MEASURING PITCHER

#### ITEM# PM80032 (32 OZ.), PM80064 (64 OZ.), PM80128 (128 OZ.)

These measuring pitchers feature extra-strong construction and they are chemically resistant to a wide variety of chemicals. Polypropylene. Black debossed oz. & ml raised graduations. Excellent pouring control handle is comfortable even with gloved hand.



### TIP N' POUR MEASURING BOTTLE

#### ITEM# TP32 (32 OZ.), TP64 (64 OZ.)

Tip n pour containers feature a separate graduated chamber to allow for measurement from simply tilting the plastic bottle. Other common application of tip and measure bottles are fertilizer treatments, pest control solutions and other liquids that require precise pours. Most of these plastic measuring containers feature a high density polyethylene (HDPE) construction.



### GRADUATED MEASURING CYLINDER

#### ITEM# PC004 (4 OZ.)

They offer a wide rim with tapered pour spout for easy pouring and filling. The non-wetting interior surface eliminates concave menisci, providing more accurate measurements. The wide pentagonal base provides added stability and keeps the cylinder from rolling.



### CHAPIN SHUT OFF ASSEMBLY

#### ITEM# CHP68138

Features cushion grip and removable/cleanable filter. Equipped with chemical resistant Fluoroelastomer seals and gaskets. Fits most backpack sprayers



### CHAPIN SPRAY WAND 20" POLY

#### ITEM# CHP68219

For use with all backpack sprayers with poly discharge



### CHAPIN 21PSI CONSTANT FLOW VALVE RED

#### ITEM# CHP68501

21 PSI Constant Flow Valve, 3/8-Inch BSP Thread, Red. Includes 11/16-Inch adapters



### PBI SPRED-RITE PADDLE CAP AND TUBE REPLACEMENT

#### ITEM# PBI3130002 (PADDLE CAP) ITEM# PBI3130003 (TUBE)

21 PSI Constant Flow Valve, 3/8-Inch BSP Thread, Red. Includes 11/16-Inch adapters

READ PRODUCT DOCUMENTATION FOR SETTINGS & APPLICATION RATES



## LONG SLEEVE NITRILE GLOVES

**ITEM# CSTA772XL (BOX OF 5 XL GLOVES)**

This flexible, robust glove is designed for continuous wear and fully coated, with extra coating over entire hand. Extended sewn sleeve keeps the sleeve correctly adjusted while a rough finish over the entire surface adds exceptional dexterity and tactile feel. Features anti-bacterial and anti-odor treatment for greater hygiene and allow for easy-hang storage.

## 8 MIL. DISPOSABLE POWDER-FREE BLUE NITRILE GLOVES

**ITEM# BSO1UH8000XL (BOX OF 50 XL GLOVES)**

Provides chemical splash and oil protection. Designed for jobs requiring the utmost in barrier protection, while keeping tactile discrimination. Suitable for food contact, laboratory and small parts handling.

# LEBANON TURF ROOTS



## LEBANON TURF ROOTS TREE SAVER

**ITEM# LEB2756657 (600 OZ PAIL) LEB2756658 (150 X 3 OZ PACKETS)**

A granular soil amendment with beneficial bacteria and mycorrhizal fungi. For planting and transplanting trees, shrubs and flowers. Contains beneficial rhizosphere bacteria, mycorrhizae, help meal and humic acids to improve soil and plant health.



## LEBANON TURF ROOTS DRYROOTS 3-3-3 GRANULAR FERTILIZER

**ITEM# LEB2757220 (25 LB.)**

dryROOTS® formula is a granular fertilizer designed to improve fertility and microbial activity in depleted soils. Use on newly planted trees, shrubs, gardens, turf and sod, helps prevent transplant shock. NPK 3-3-3 formula contains micronutrients and various microbial nutrients (vitamins, amino acid, and myoinositol) as well as humic acids, which may aid in the uptake of mineral nutrients.



## LEBANON TURF ROOTS M-ROOTS 3-3-3 GRANULAR FERTILIZER

**ITEM# LEB2757141 (25 LB.)**

A natural granular fertilizer with mycorrhizal fungi and NPK of 3-3-3. For planting and transplanting trees, shrubs and flowers. Organic sources of nitrogen for slow release that also improve soil health. Potassium sulfate for immediate availability of the potassium with the added benefit of a small amount of sulfur.

# LIQUID FERTILIZER & BIO STIMULANT



## SELECT SOURCE 15-0-0 6% FE

**ITEM# SSCSELIRON1500 (2.5 GAL.)**

**ACTIVE INGREDIENTS: NITROGEN: 15%, IRON: 6%**

For enhanced green-up and nutritional deficiency.



## DAKOTA REV TURF PRO

**ITEM# DAKRT6001 (2.5 GAL.)**

REV's complex natural organic compound structure and formulation make it effective in almost any growing situation. This all-natural, organic growth stimulant is a great additive for any horticulture, turf, or agricultural application in which you wish to help promote improved growth, strength, and overall health.



## GROWTH PRODUCTS ARBOR CARE 15-8-4 40% SLOW RELEASE

**ITEM# SSCSELARBORPRO (2.5 GAL.)**

**RECOMMENDED FOR USE ON TREES, SHRUBS & ORNAMENTALS**

Growth Products produces Arbor Care 15-8-4 with micros from only the highest quality N-P-K sources and micros. It features slow-release Nitrogen and other vital micronutrients.

READ PRODUCT LABEL FOR FULL DETAILS, APPLICATION RATES AND RESTRICTIONS



# TYPAR GEOSYNTHETICS



**GEOCELL GS CELLULAR CONFINEMENT SYSTEM (250 SERIES)**  
**ITEM# TYP124107 (4 IN. DEPTH, 16.4 FT. X 23 FT. PANELS)**  
**PEDESTRIAN, LIGHT VEHICLE LOAD SUPPORT & SLOPE PROTECTION**

**ITEM# TYP124121 (6 IN. DEPTH, 16.4 FT. X 23 FT. PANELS)**  
**LIGHT VEHICLE LOAD SUPPORT & SLOPE PROTECTION**



**GEOCELL GS CELLULAR CONFINEMENT SYSTEM (350 SERIES)**  
**ITEM# TYP124084 (4 IN. DEPTH, 16.4 FT. X 23 FT. PANELS)**  
**SLOPE PROTECTION**

**ITEM# TYP124114 (6 IN. DEPTH, 16.4 FT. X 23 FT. PANELS)**  
**SLOPE PROTECTION**

TYPAR GEOCELL GS is a cellular confinement system for load support and slope protection applications. The cellular confinement system utilizes the strength and permeability of a geotextile to create a 3-dimensional cellular confinement system. Manufactured from dark grey PP/PE bicomponent fiber geotextile, the cell walls are permeable to water, air and nutrients, increasing stability and vegetative performance.

(Steel Fixing J-Pins, Item #TYP051038)



**GRASSPROTECTA STANDARD GRASS REINFORCEMENT MESH**  
**ITEM# TYP055876 (6.6 FT. X 65.6 FT.)**

**GRASSPROTECTA HEAVY DUTY GRASS REINFORCEMENT MESH**  
**ITEM# TYP055470 (6.6 FT. X 65.6 FT.)**

TYPAR GrassProtecta™ grass reinforcement mesh is a thick plastic mesh supplied on a roll that is installed directly onto existing grass to protect, reinforce and stabilize the grass against damage caused by pedestrians and vehicles.

(50 PCS. Steel Fixing U-Pins, Item #TYP041824

(18 IN. Scour Protection Anchor Pins, Item #18DTS218)



**BODPAVE 85 POROUS PAVING GRIDS**

**ITEM# TYP057580 (45 PCS. 3.28 IN. X 3.28 FT. [10.76 SQ. FT.])**

TYPAR BodPave 85 porous pavers are a ground reinforcement paving grid system manufactured from recycled HDPE plastic. TYPAR BodPave 85 porous grass pavers / paving grids inter-connect with each other to provide a very strong stable surface capable of withstanding heavy vehicle loads.

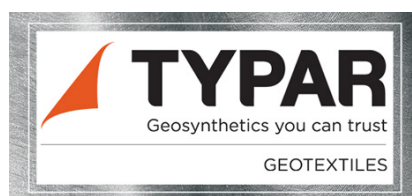
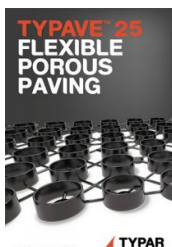
(White Parking Stall Markers, Item #069675)



**TYPAVE 25 FLEXIBLE POROUS PAVING**

**ITEM# TYP057581 (46 IN. X 46 IN. [13.88 SQ. FT.])**

TYPAVE™ 25 by TYPAR is a new US manufactured porous paver made from recycled plastic material to meet LEED credits. TYPAVE™ 25 paver's structure is constructed with Quick-Snap integral joints between sections creating a strong monolithic structure that can be staked into the ground removing the chance for shear or slip.



# AQUARIUSSUPPLY™

IRRIGATION • LIGHTING • PONDS • DRAINAGE • TURF



CONTACT US TODAY



## PENNSYLVANIA

NORRISTOWN | 610.277.9746  
ALLENTOWN | 610.231.2009

## MARYLAND

MILLERSVILLE | 410.729.0200

## VIRGINIA

CHANTILLY | 703.263.1272  
FREDERICKSBURG | 540.891.8100

## NORTHERN NEW JERSEY

WHIPPANY | 973.386.9076  
HAWTHORNE | 973.423.0222

## SOUTHERN NEW JERSEY

LAKEWOOD | 732.363.5034  
SEWELL | 856.228.6070

## DELAWARE

NEW CASTLE | 302.328.3326

[WWW.AQUARIUSSUPPLY.COM/LOCATIONS](http://WWW.AQUARIUSSUPPLY.COM/LOCATIONS)

EDITION 2, MARCH 2021